



# HOME SURPLUS<sup>TM</sup>

## MEASURING GUIDE

Measuring your kitchen just got easier! It is quicker than you think. *Get started now.*

# WE MADE IT EASY

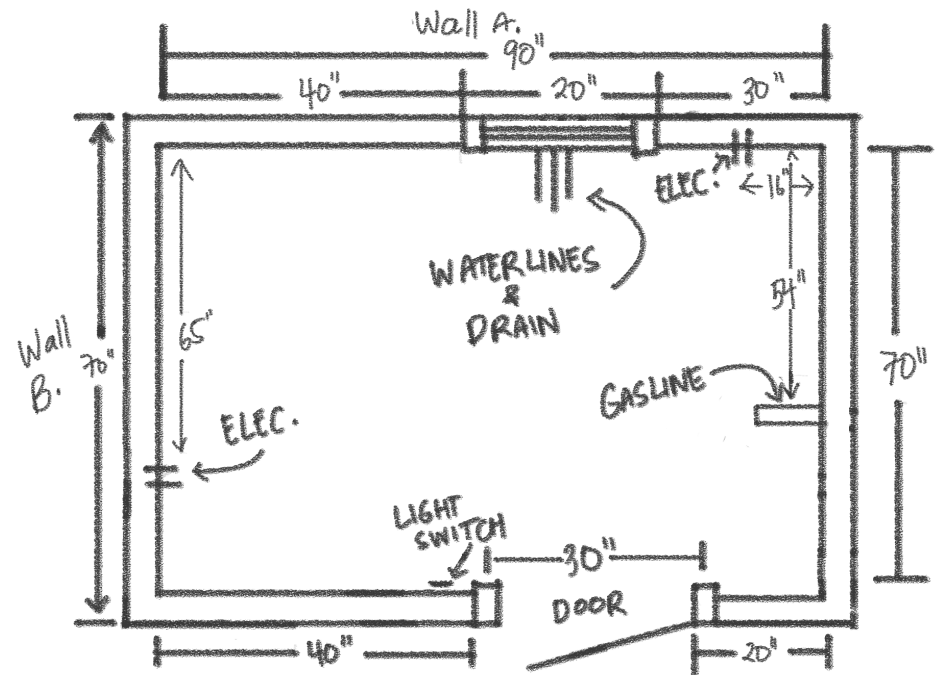
Our Measure Guide is easy to use and helps collect the basic information to help you and your designer start your design.

Accurate measurements of your kitchen floor plan is important in designing your new cabinets. Be sure to show exact locations of doors, windows, hood vents, exhaust, gas lines, water line, drain line, outlets, switches, light fixtures, and heat vents.

If you want to use the attached graph paper, that's great. If not, then all we need is your drawing.

We're here to help — please call **732-888-3600** with any questions.

Your completed floor plan should resemble the diagram on this page.



## STEP 1: YOUR KITCHEN SHAPE

Draw your kitchen as a box showing all the walls that you think will have cabinets. Be sure to include any major structural features or obstacles.

## STEP 2: DRAW IT OUT

Mark any openings such as windows and doorways. Be sure to include radiators or other obstacles that affect where cabinets can be installed. Now, label all the openings in your kitchen.

## STEP 3:

### MEASURE

Now it's time to get out the tape measure. Measure all the openings, from outside edge to outside edge, and add them to your drawing. If you're uncomfortable with precise measurements feel free to round to the nearest inch. **Double check your measurements.**

## STEP 4:

Most people already have a good idea of where the major items will go in their kitchen. Feel free to draw your ideas of what you would like and include the placement of your sink and appliances.

## OPTIONAL

### PICTURES OF YOUR KITCHEN

What can really help your designer is to take 'before' pictures of your kitchen and send them along with your measurements. That's it! You're done! It is that easy to measure your kitchen.

We offer one free design



SHAKER WHITE  
Available exclusively at Home Surplus



## BASIC CUSTOMER INFO

DATE:

---

CUSTOMER NAME:

---

PROJECT TIME FRAME:

---

PHONE NUMBER:

---

EMAIL ADDRESS

---

☐ DELIVERY ☐ PICK UP

DELIVERY ADDRESS:

---

---

---

## DESIGN INFO

CABINET STYLE:

---

WALL CABINET HEIGHT:

---

CEILING HEIGHT:

☐ SOFFIT ☐ NO SOFFIT

WANTS:

☐ TRASH PULL OUT

☐ DOUBLE ☐ SINGLE

☐ SPICE PULL OUT

☐ GLASS DOORS

☐ WINE RACK

☐ LIGHT RAIL MOLDING

☐ CROWN MOLDING

☐ TO CEILING

☐ ROLL OUTS IN BASE CABINETS

OTHER:

---

---

## APPLIANCE SPECS

RANGE:

☐ COOKTOP ☐ FREE- STANDING

COOKTOP MAKE & MODEL:

---

WALL OVEN MAKE & MODEL:

---

REFRIGERATOR SIZE: (WIDTH, DEPTH, HEIGHT)

---

MICROWAVE MAKE & MODEL:

---

MICROWAVE LOCATION:

---

DISHWASHER MAKE & MODEL::

---

SINK STYLE:

---

HOOD:

☐ STAINLESS STEEL ☐ WOOD

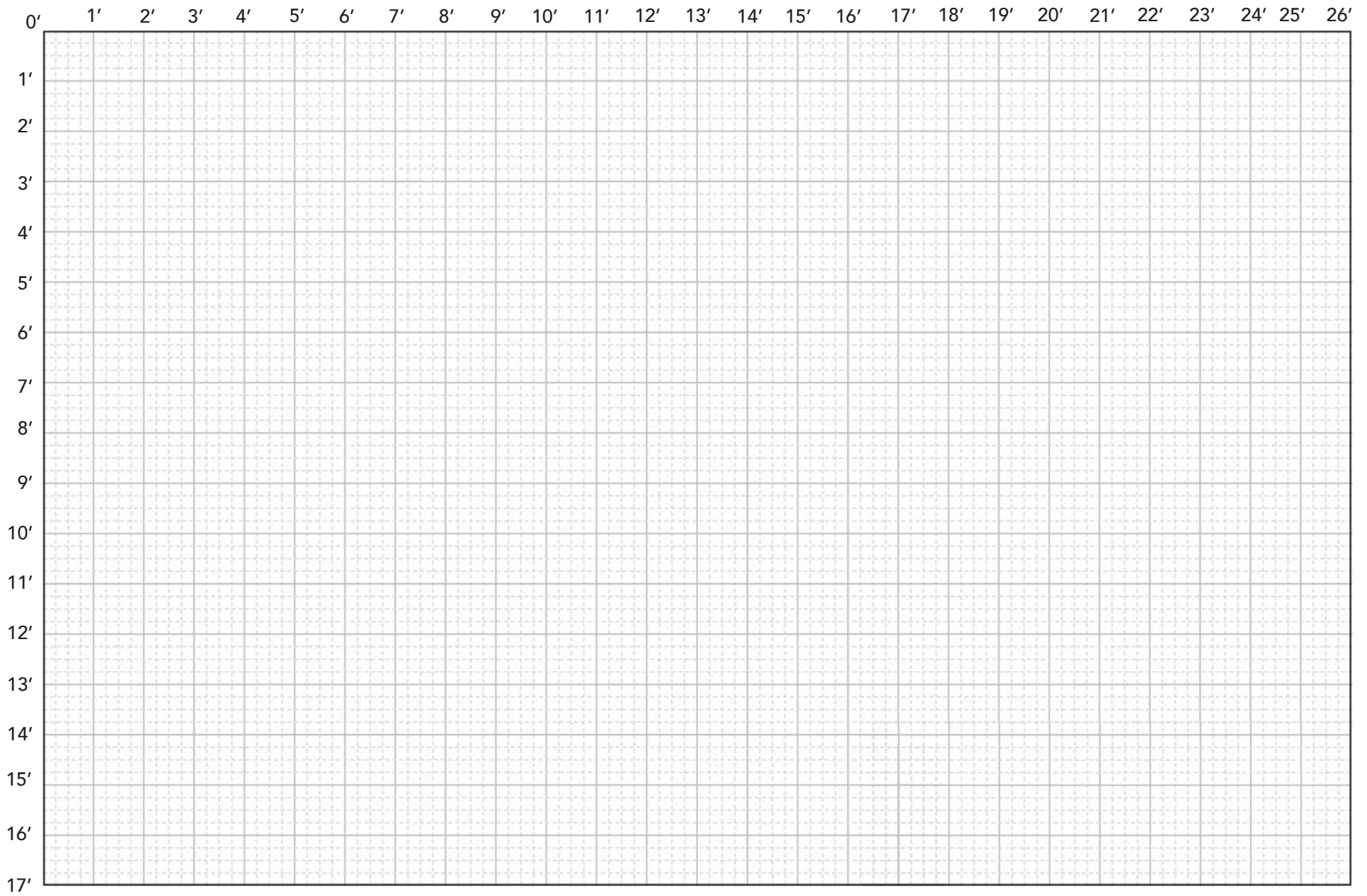
MAKE & MODEL:

---

MISC APPLIANCES:

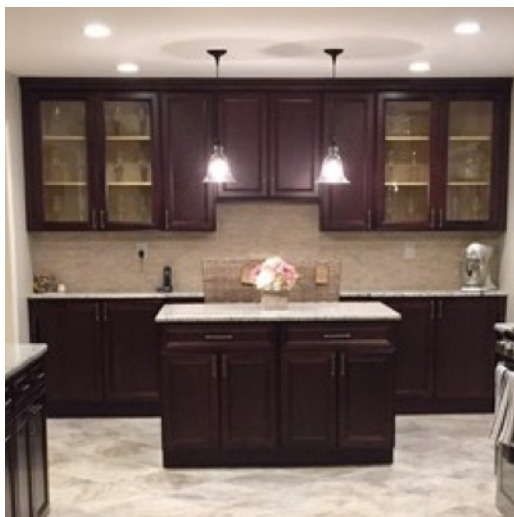
---

---



*\*Each large square represents 1 sq. ft. and the small squares are 3".*

# PICK A STYLE:



ABERDEEN



VILLANOVA



VILLANOVA RAISED PANEL



SHAKER WHITE



AMESBURY ESPRESSO

**OTHER STYLES  
AVAILABLE.**



# SEND MEASUREMENTS TO US!

Now that you have taken your measurements and attached your kitchen pictures, all that is left is to forward it to us! Forward the measurement and information form to us via:



## SHOWROOM

Bring (or mail) it to our showrooms:

**KEYPORT: 180 State Route 35, NJ 07735**

**BELLMAWR: 118 North Black Horse Pike  
Bellmawr, NJ 08031**



## EMAIL

**[design@homesurplus.com](mailto:design@homesurplus.com)**



## SMARTPHONE

Take pictures of the form & your drawing and email them to:

**[design@homesurplus.com](mailto:design@homesurplus.com)**



## WEBSITE

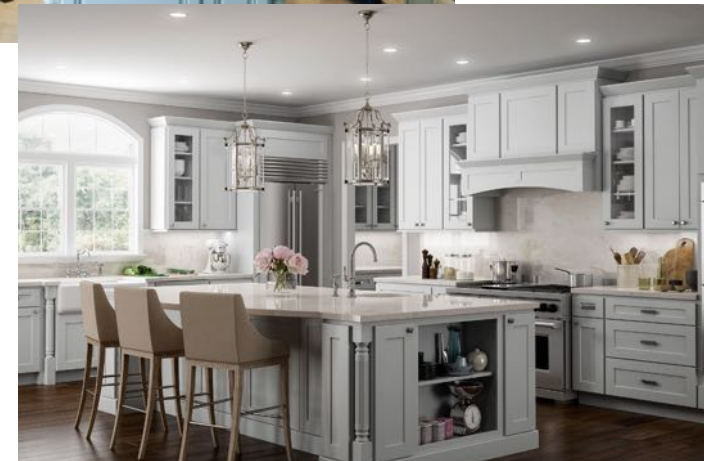
Use the web form at

**[www.homesurplus.com](http://www.homesurplus.com)**



## FAX

**732-888-3949**



*A picture is worth a thousand words.  
Please remember to add your current  
kitchen pictures!*



**HOME SURPLUS™**

[design@homesurplus.com](mailto:design@homesurplus.com) | 732-888-3600

VILLANOVA RAISED PANEL  
Available exclusively at Home Surplus